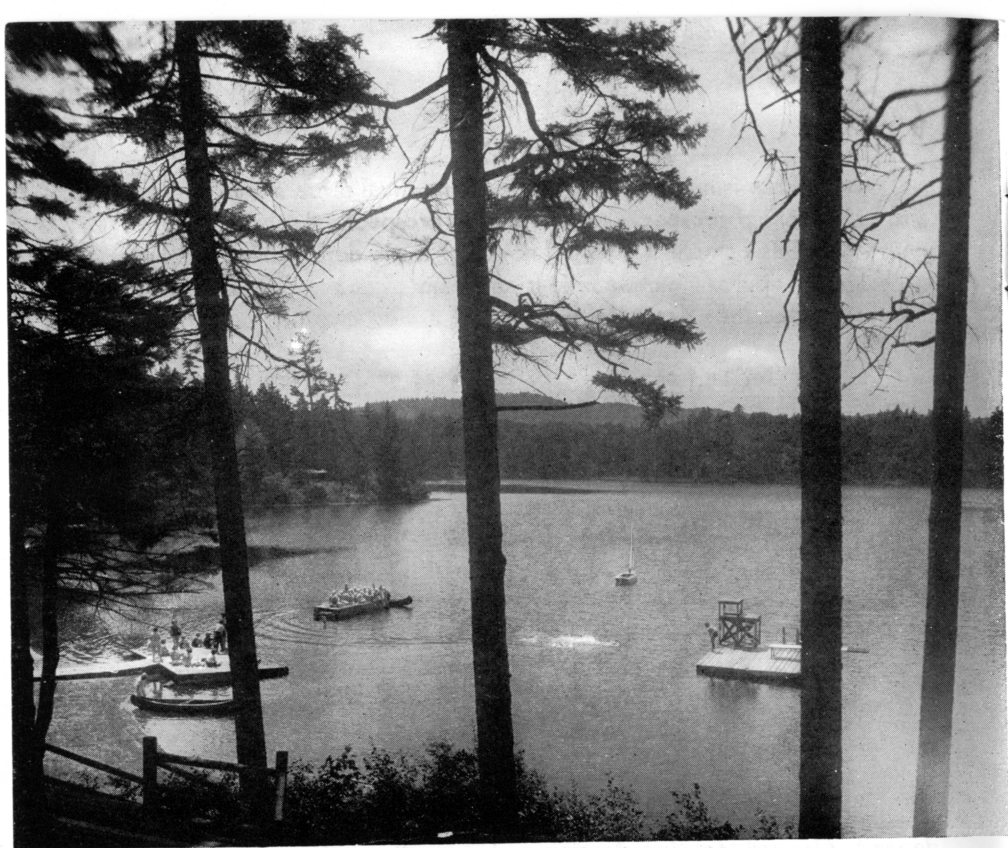


Mit Zuberwäpfe

Moss Lake

the camp of the specialists





A BRIEF SUMMARY OF MOSS LAKE
AND AN INVITATION TO SEND FOR
ITS REGULAR CATALOGUE
IF YOUR CAMP INTEREST IS AN EDUCATIONAL ONE

Beste Guebe van

24.8.65

Receives for success

Moss Lake is not a summer camp in the usual sense of the phrase, and not all camp prospects are Moss Lake prospects. Accordingly, the purpose of this pamphlet is to aid new families in determining whether or not they approve our ambitious program of social education and whether or not they deem its greater cost a wise investment.

It is a cost that can be justified only as an educational expense, but those who share our conviction that the vacation weeks of childhood and adolescence can hold the master key to personality development will find Moss Lake to be of unique interest.

Our conviction is that a Moss Lake summer should be a real investment in future as well as current happiness, and the trite but equally important one that whatever is worth doing is worth doing well. To implement this philosophy we have assembled a staff of nationally known specialists who coach the sports we feel contribute most generously to a girl's social education—riding, swimming, tennis, sailing, archery, and skiing.

Fencing is added to the list because of its effectiveness in developing the speed, timing, and coordination on which the others depend. Also we feel that dancing and dramatics make valuable contributions in terms of poise and grace. Further, in our teen age division we make speed readings, typing, bridge and riflery available for those who wish to add these skills to their collegiate and social armamentaria.

The Moss Lake fee while high is literally all-inclusive and we believe it difficult to exaggerate the educational importance of this simple fact. Many of our families are extremely affluent while for others the camp tuition is a major item, but with all recourse to the family pocketbook eliminated a complete democracy is automatically established and each girl's talents and personality become the sole determinants of her stature. Further, as riding, laundry, tutoring when necessary, medical attention, stationery, and trips all are covered by the one fee that figure often is less than the final cost for an active girl in the conventional \$700 - \$800 camp.



John Zimnoch

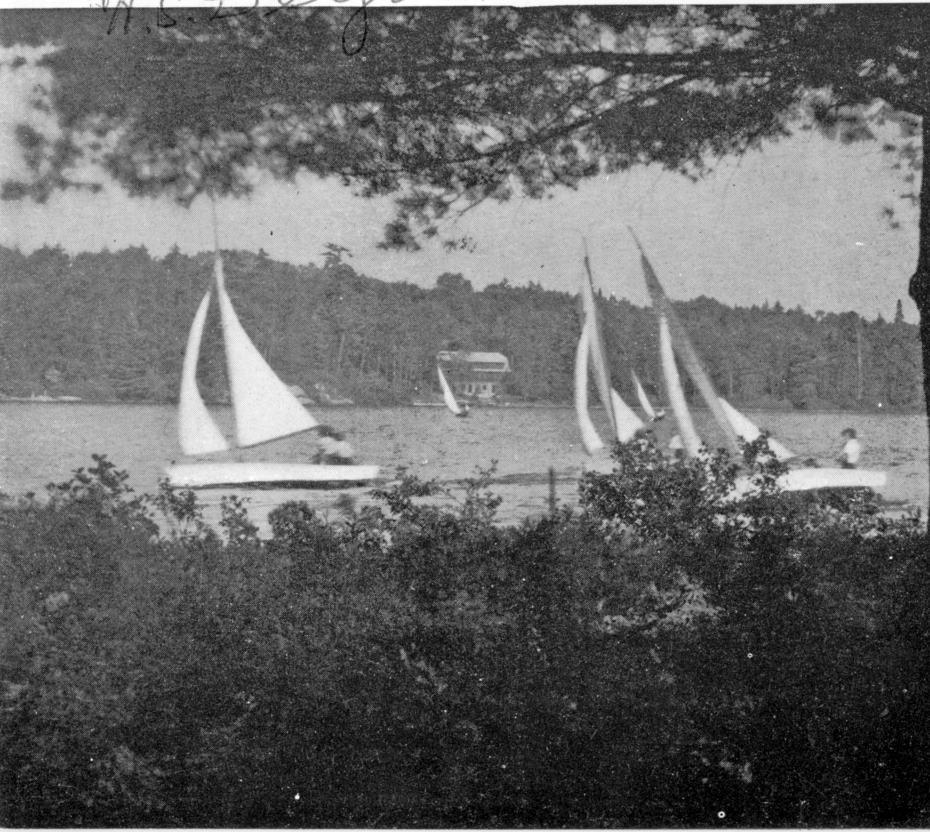
JOHN ZIMNOCH





HAROLD DeGROAT

H. S. DeGroat





*Best Wishes
Lillian Martin*

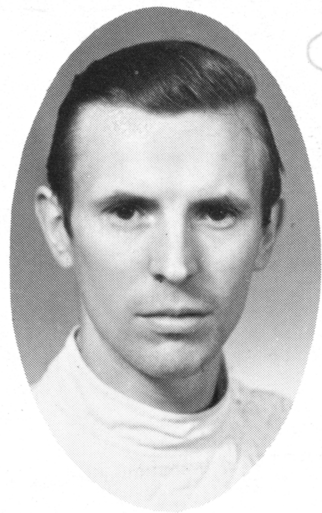
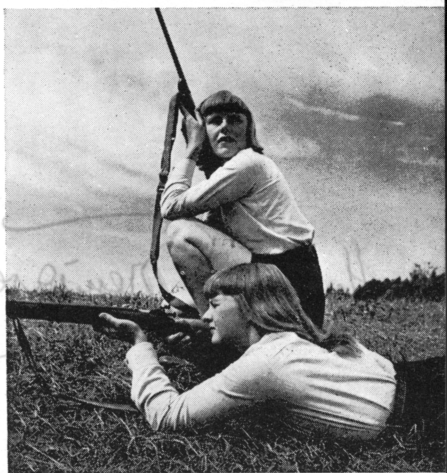
LILLIAN MARTIN





CARL THOMPSON

Carl P. Thompson



FRANZ FUHRMANN





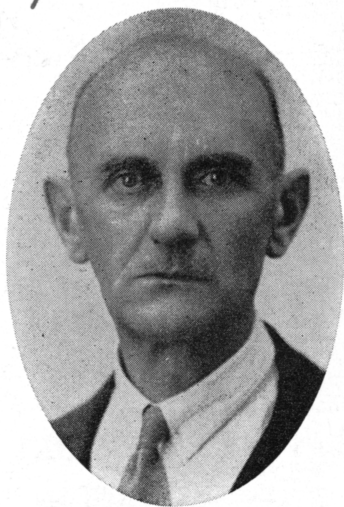
Daily Riding
For All

Separate Rings for
Elementary Equitation
Advanced Equitation
and Jumping.

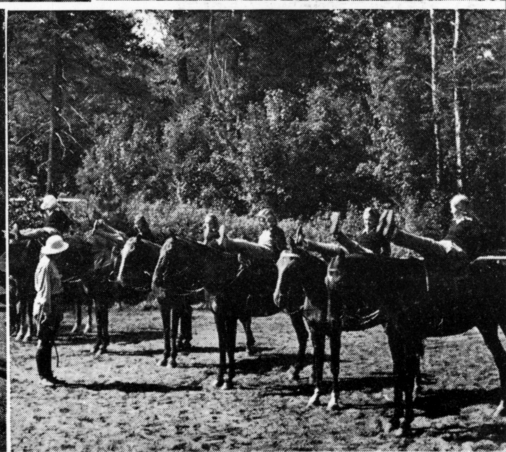
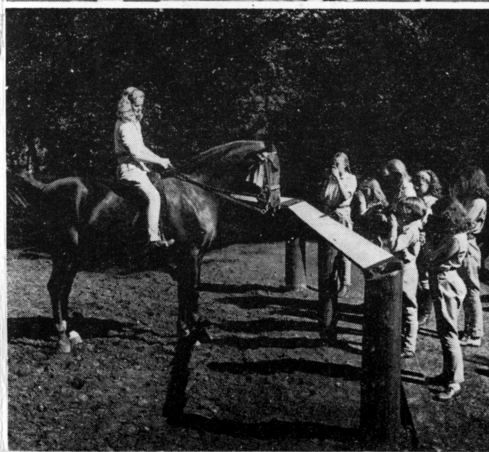
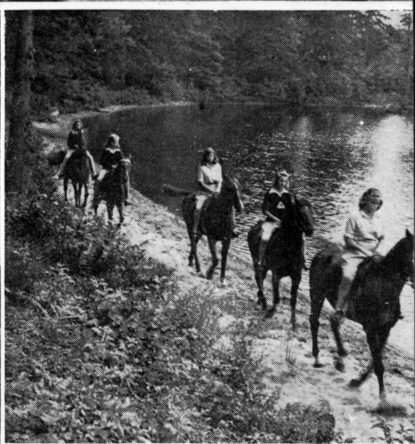
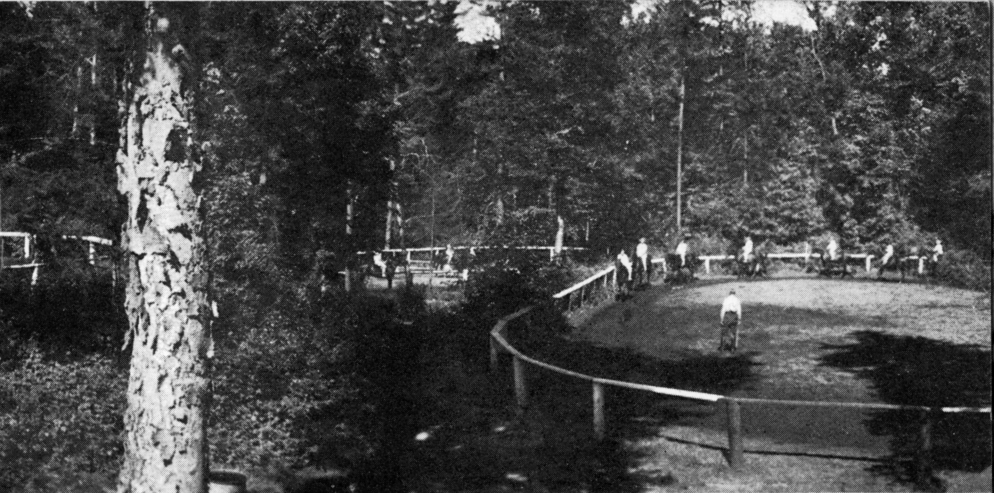
Alexander Menikoff Topica Tenuta



CAPTAIN MICHAEL TEPLAKOW



COLONEL BORIS GUENICHTA



J
U
N
I
O
R

D
I
N
I
N
G

H
A
L
L



S
E
N
I
O
R

D
I
N
I
N
G

H
A
L
L



L
O
D
G
E
D
I
N
I
N
G
H
A
L
L



A
T
Y
P
I
C
A
L
B
U
N
G
A
L
O
W



Our skiing facilities include an island ski house, a slalom course, an adjustable jump, a 16-foot Century, and one outboard ski boat.



HENRY SUYDAM



OUR ACADEMIC INTERESTS

The counterpart of Moss Lake is our Adirondack-Southern boarding school in St. Petersburg. Its special features are a choice waterfront location, an extraordinarily high teacher-student ration (1:4), small classes, and especial attention to study and reading skills, and to the modern languages. We consider English to be much the most important of these and it receives ten hours of classroom attention each week.

The chief importance of this to Moss Lake patrons is that a portion of this faculty continues with us through the camp season and makes available a high calibre of instruction in the full range of secondary subjects. This is included in the regular tuition of the camp. For most the reading department is of the greatest value and since real skill here can save so many hours of winter study we advise all Lodge girls to take one hour a day throughout the year. Except for this subject (and any other which may be prescribed) we advise that the tutoring be limited to subjects inadequately covered in a camper's regular school, but where work is needed we will happily schedule the time required. In June and September there are intensive tutoring sessions, each of four weeks duration.

Advice of your interest can take the form of a simple note, or if the season is late, of the formal registration blank usually enclosed with this folder. The latter, of course, ensures our holding a place pending the interview and final approval.



3
D
I
S
T
I
N
C
T
U
N
I
T
S

C
L
O
S
I
N
G

The division of Moss Lake into three separate camps is the most important of the high lights listed on the closing page because it means that even in the younger units each girl can immediately become an important individual instead of waiting several summers for the graduation of older campers. Similarly the camp designed for, and populated exclusively by, teen-agers can run a program much more appropriate to this level than can one which must serve the interests of a wide age range.

On the other side of the picture it permits us to enjoy facilities the cost of which a small organization would find prohibitive, and with each camp having a distinct personality of its own the monotony of repetition which commonly begins to dull the edge of a girl's interest in her third or fourth season is avoided.

The occupants of the fifteen-year-old bungalow pictured above nicely typify this sustained interest and also give a quite accurate cross section of our geographical distribution. Of these girls four were new campers, two had spent one or more previous summers in Lodge, three in addition to one earlier Lodge summer also had been in Senior Camp, while four had some years in each of our three divisions. Including the four new girls the average time at Moss Lake was $3\frac{1}{2}$ years and most should still be with us two additional years. Three girls were from Cleveland, three from upstate New York, two from New York City, two from Westchester, and one each from Cuba, California, and Illinois.

If this thumbnail description of Moss Lake leaves you feeling it is a camp which may meet your requirements, we will be happy to send you our regular catalogue and arrange an interview at an early date. Within the limits of the continental United States distance need be no bar to these interviews for we feel that one of Moss Lake's major advantages is the wide geographical distribution of its clientele and consider it as great a privilege to plan an airport meeting in Chicago, Dallas, or Miami as to call upon a Long Island or Connecticut family. Advice of your interest can take the form of a simple note, or if the season is late, of the formal registration blank usually enclosed with this folder. The latter, of course, will ensure our holding a place pending the interview and final approval.

DR. GEORGE H. LONGSTAFF, *Director*

8932 - 164th Street
Jamaica, N.Y.
January - May
RE 9-2082

Moss Lake Camp
Eagle Bay, N.Y.
June - September
9533

647 - 34th Avenue So.
St. Petersburg, Florida
October - December
894-4038

Private Adirondack Lake and Preserve 1800 ft. above sea level in the State's largest ragweed free area.

Over two miles from the nearest habitation but only five hours from either Buffalo or New York.

Three completely separate camps of fifty girls each Junior Camp 6-10, Senior Camp 11-13, The Lodge 14-19.

Three Riding Rings, Three Instructors, Forty Horses, Endless bridle paths 6-12 hours a week of riding.

Rustic Bungalows with Baths and Electric Lights

20 Sailboats, 6 War Canoes, 30 Small Canoes

One Indoor and Seven Outdoor Tennis Courts

Higby Club for Parents Three Miles

A Large Indoor Playground

Three Heated Infirmaries

While we give but little space to describing our physical equipment, its importance should not be minimized for it commonly determines the ability of a camp to fulfill the many implied promises of its booklet. Salient Moss Lake figures which should be included in any comparison are: a Camper to Staff (Specialists, Counsellors, Nurses, and Service and Maintenance Employees) ratio of 2:1, Tennis Courts 20:1, Sailboats 6:1, Canoes 5:1, Horses 3½:1, Baths 9:1, Toilets 5/2:1, and Lavatories 4:1.

